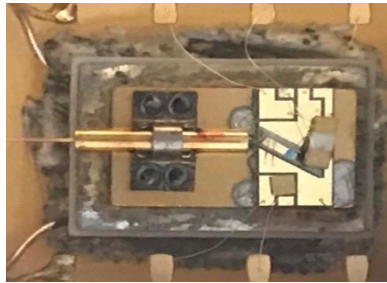


Superluminescent Light Emitting Diode



Features

- High power output
- Metal-coupled and hermetic package & TEC inside
- Polarization-maintaining or single-mode
- Optical fiber 8pin or 14 pin butterfly package

Applications

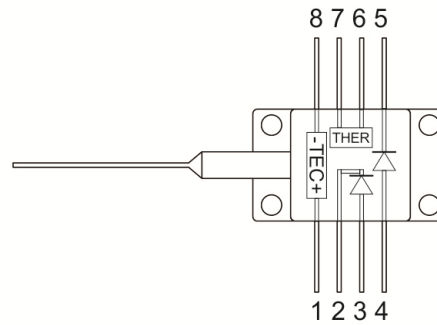
- Optic test
- Optical fiber transmission system
- Fiber-optic sensor
- OCT

Optical/Electrical Characteristics (T=25°C, unless otherwise stated)

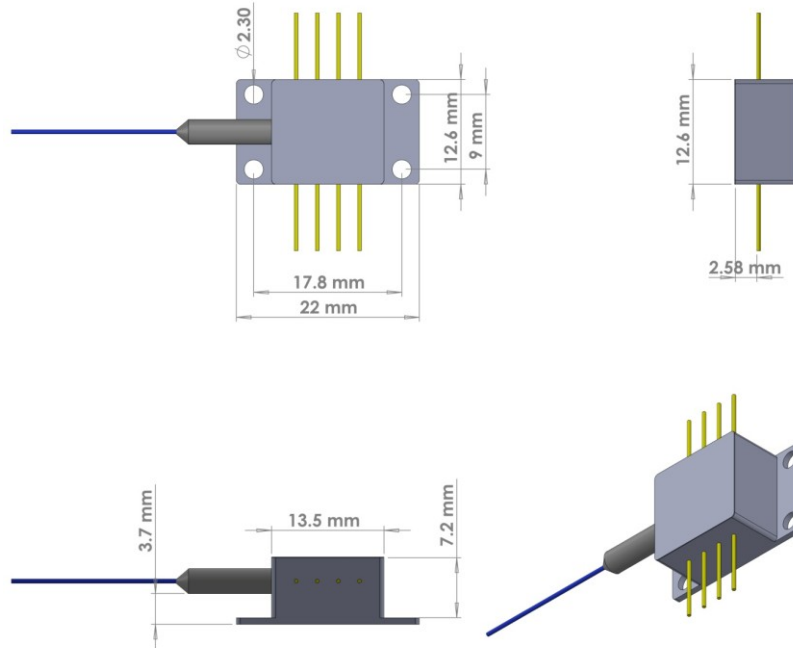
Parameter	Symbol	Min	Type	Max	Unit
Operating Current	I_{op}	-	-	300	mA
Forward Voltage	V_F	-	1.2	2	V
Power In PMF	P_o	7	-	-	mW
Central Wavelength	λ	1530	1550	1570	nm
Bandwidth	B_{FWHM}	55	-	-	nm
Spectrum Modulation	R	-	0.2	0.4	dB
Polarization Extinction Ratio	PER	15	-	20	dB
Thermistor Resistance	R_{therm}	9.5	10	10.5	kΩ
Thermistor B-Value		--	3950	--	K
Thermoelectric Cooler Voltage	V_{TEC}	-	-	3.0	V
Thermoelectric Cooler Current	I_{TEC}	-	-	2	A
Case Temperature	T_c	-20	-	60	C
Lead solder Temperature				260	C
Lead Soldering Time				10	S
Storage Temperature	T_{STG}	-40	-	85	C
Storage Humidity	-	5	-	85	%RH

Pin Description

Pin Guide	
1	TEC(+)
2	THERMISTOR
3	THERMISTOR
4	DIODE ANODE (+)
5	DIODE CATHODE (-)
6	PD CATHODE (+)
7	PD ANODE (-)
8	TEC (-)



Package Dimensions 8 pin

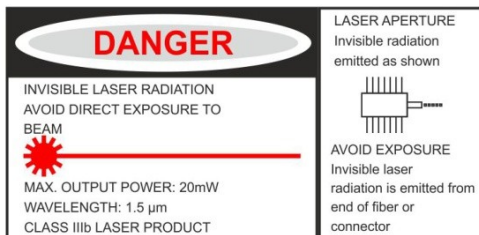


Order Information

P/N: SELD - ①-②-③-④-⑤-⑥-⑦

①	②	③	④	⑤	⑥	⑦
Operating Wavelength	Travel Axis	Package	Fiber Type	Fiber Diameter	Fiber Length	Connector
13 : 1310nm	F : Fast	1:8pin	PP : PMF	2 : 250µm	1 : 0.8 m	0 : Bare Fiber
15 : 1550nm	S : Slow	2:14pin	SP : SMF	9 : 900µm	2 : 1.0 m	FP : FC/PC
X : XX			X : XX	2 : 2.0mm	X : XX	FA : FC/APC
				3 : 3.0mm		SP : SC/PC
						SA : SC/APC
						LP : LC/PC
						LA : LC/APC

Note1: The PM fiber and the connector key are aligned slow axis.
Note2: IL, RL and ER Values specified are without connector loss.
Note3: Specifications are subject to change without notice.



MAXER PHOTONICS LTD.

180 West Beaver Creek Road, Richmond Hill,
 Ontario, Canada, L4B 1B4

www.maxerphotonics.com

sales@maxerphotonics.com